

## INDUSTRIAL PUMP CONTROL PANELS (IPCP)



Shown: Duplex 1 HP Industrial Pump Control Panel with NEMA 4 enclosure. (IPCP-DP-010-4-N4)

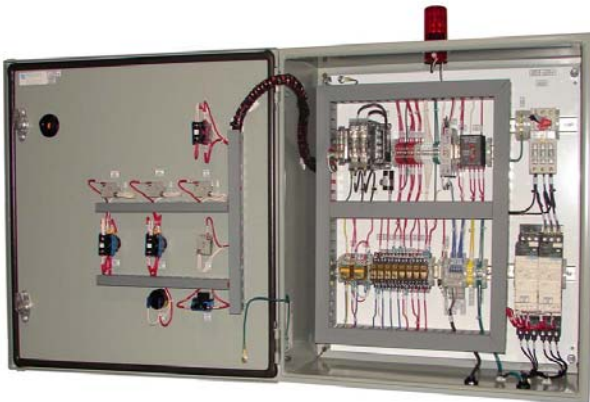
The standard Industrial Pump Control Panel (IPCP) is a UL-Listed control panel designed for simplex or duplex pump control in industrial pump down applications. Custom configurations including PLC control are available, call or email Sales for more details.

### Specifications

- Standard control panels for pump applications
- Simplex (one pump) or duplex (two pumps) configurations
- Alternating lead/lag pump operation on duplex models
- Hand-Off-Auto selector switches for automatic or manual control
- Remote control panels for Wastech vertical pump lift stations (VPLS)
- Single-phase or three-phase power
- Color-coded and marked wires for simple installation and maintenance

### Standard Features

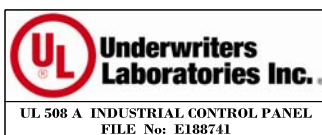
- UL-Listed control panel
- NEMA 4/4X, hinged door enclosures
- Illuminated E-stop with protective shroud
- Power On green light indicator
- Pump Run green light indicator
- Pump Hand-Off-Auto selector switch (non-illuminated)
- Overload light for each pump (for 208-230/460 VAC 3-phase panels)
- High-high level alarm red light indicator with dry contact
- Leak alarm red light indicator
- Common alarm beacon with dry contact
- Lockable main power disconnect
- Up to four (4) discrete level inputs for pump control
  - LL - both pumps OFF
  - L - lead pump ON
  - H - lag pump ON
  - HH - alarm
- Alternator (pumps alternate automatically after every pump down cycle)
- Run permissive
- Audible alarm (buzzer) with silence button



Shown: Interior view of duplex 1 1/2 HP Industrial Pump Control Panel with NEMA 4 enclosure. (IPCP-DP-015-4-N4)

### Optional Feature

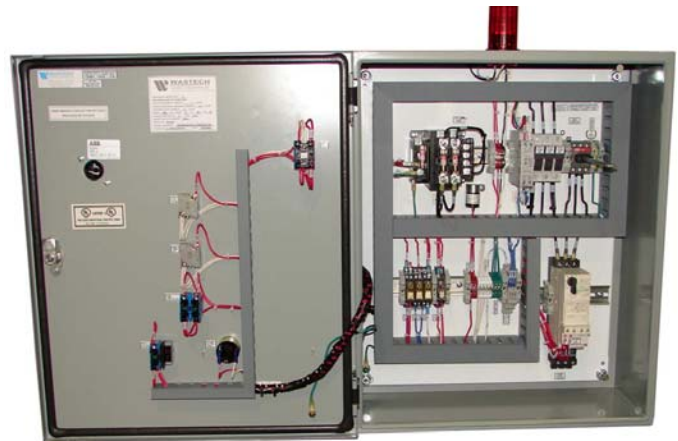
- Push-To-Test pilot lights



ORDERING INFORMATION						
<b>IPCP</b>	Industrial Pump Control Panel					
	<b>Number of Pumps</b> (Choose One)					
	<b>-SP</b>	Simplex				
	<b>-DP</b>	Duplex				
	<b>Horsepower</b> (Choose One)					
	<b>-005</b>	1/2 HP				
	<b>-007</b>	3/4 HP				
	<b>-010</b>	1 HP				
	<b>-015</b>	1 1/2 HP				
	<b>-020</b>	2 HP				
	<b>-030</b>	3 HP				
	<b>-050</b>	5 HP				
	<b>-075</b>	7 1/2 HP				
	<b>Power Requirements</b> (Choose One)					
	<b>-1</b>	115 VAC / 1 / 60 Hz				
	<b>-2A</b>	208 VAC / 1 / 60 Hz				
	<b>-2B</b>	230 VAC / 1 / 60 Hz				
	<b>-3A</b>	208 VAC / 3 / 60 Hz				
	<b>-3B</b>	230 VAC / 3 / 60 Hz				
	<b>-4</b>	460 VAC / 3 / 60 Hz				
	<b>Enclosure Rating</b> (Choose One)					
	<b>-N4</b>	NEMA4 – Powder Coated Carbon Steel				
	<b>-N4XF</b>	NEMA4X – Fiberglass				
	<b>-N4XS</b>	NEMA4X – 304 Stainless Steel				
	<b>Options</b>					
	<b>-PT</b>	Push to test pilot lights				
<b>Example Part Number</b>						
<b>IPCP</b>	<b>-SP</b>	<b>-005</b>	<b>-1</b>	<b>-N4XF</b>	<b>-PT</b>	<b>IPCP-SP-005-1-N4XF-PT</b>



Shown: Simplex 1/2 HP Industrial Pump Control Panel with NEMA 4 enclosure. (IPCP-SP-005-1-N4)



Shown: Interior view of simplex 5 HP Industrial Pump Control Panel with NEMA 4 enclosure. (IPCP-SP-050-3-N4)

DIMENSIONS AND TECHNICAL INFORMATION							
	PART NUMBER		VOLTAGE	AMPERAGE	ENCLOSURE SIZE		
					N4	N4XF	N4XS
SIMPLEX	1/2 HP	IPCP-SP-005-1	115/1 PH	15	20x16x8	20x16x8	20x16x8
		IPCP-SP-005-2A	208/1 PH	10	24x24x10	24x24x10	30x30x10
		IPCP-SP-005-2B	230/1 PH	10			
		IPCP-SP-005-3A	208/3 PH	10			
		IPCP-SP-005-3B	230/3 PH	10			
		IPCP-SP-005-4	460/3 PH	10			
	3/4 HP	IPCP-SP-007-1	115/1 PH	25			
		IPCP-SP-007-2A	208/1 PH	15	24x24x10	24x24x10	30x30x10
		IPCP-SP-007-2B	230/1 PH	15			
		IPCP-SP-007-3A	208/3 PH	10			
		IPCP-SP-007-3B	230/3 PH	10			
		IPCP-SP-007-4	460/3 PH	10			
	1 HP	IPCP-SP-010-1	115/1 PH	25			
		IPCP-SP-010-2A	208/1 PH	15	24x24x10	24x24x10	30x30x10
		IPCP-SP-010-2B	230/1 PH	15			
		IPCP-SP-010-3A	208/3 PH	10			
		IPCP-SP-010-3B	230/3 PH	10			
		IPCP-SP-010-4	460/3 PH	10			
	1 1/2 HP	IPCP-SP-015-1	115/1 PH	30			
		IPCP-SP-015-2A	208/1 PH	20	24x24x10	24x24x10	30x30x10
		IPCP-SP-015-2B	230/1 PH	20			
		IPCP-SP-015-3A	208/3 PH	10			
		IPCP-SP-015-3B	230/3 PH	10			
		IPCP-SP-015-4	460/3 PH	10			
2 HP	IPCP-SP-020-2A	208/1 PH	20	24x24x10			
	IPCP-SP-020-2B	230/1 PH	20				
	IPCP-SP-020-3A	208/3 PH	15				
	IPCP-SP-020-3B	230/3 PH	15				
	IPCP-SP-020-4	460/3 PH	10				
3 HP	IPCP-SP-030-2A	208/1 PH	25	24x24x10	24x24x10	30x30x10	
	IPCP-SP-030-2B	230/1 PH	25				
	IPCP-SP-030-3A	208/3 PH	15				
	IPCP-SP-030-3B	230/3 PH	15				
	IPCP-SP-030-4	460/3 PH	10				
5 HP	IPCP-SP-050-3A	208/3 PH	25	24x24x10	24x24x10	30x30x10	
	IPCP-SP-050-3B	230/3 PH	25				
	IPCP-SP-050-4	460/3 PH	15				
7 1/2 HP	IPCP-SP-075-3A	208/3 PH	30	24x24x10	24x24x10	30x30x10	
	IPCP-SP-075-3B	230/3 PH	30				
	IPCP-SP-075-4	460/3 PH	20				

DIMENSIONS AND TECHNICAL INFORMATION							
	PART NUMBER	VOLTAGE	AMPERAGE	ENCLOSURE SIZE			
				N4	N4XF	N4XS	
DUPLEX	1/2 HP	IPCP-DP-005-1	115/1 PH	25	20x20x8	20x20x8	20x20x8
		IPCP-DP-005-2A	208/1 PH	15	24x24x10	24x24x10	30x30x10
		IPCP-DP-005-2B	230/1 PH	15			
		IPCP-DP-005-3A	208/3 PH	10			
		IPCP-DP-005-3B	230/3 PH	10			
		IPCP-DP-005-4	460/3 PH	10			
	3/4 HP	IPCP-DP-007-1	115/1 PH	35	24x24x10	24x24x10	30x30x10
		IPCP-DP-007-2A	208/1 PH	20			
		IPCP-DP-007-2B	230/1 PH	20			
		IPCP-DP-007-3A	208/3 PH	10			
		IPCP-DP-007-3B	230/3 PH	10			
		IPCP-DP-007-4	460/3 PH	10			
	1 HP	IPCP-DP-010-2A	208/1 PH	20	24x24x10	24x24x10	30x30x10
		IPCP-DP-010-2B	230/1 PH	20			
		IPCP-DP-010-3A	208/3 PH	15			
		IPCP-DP-010-3B	230/3 PH	15			
		IPCP-DP-010-4	460/3 PH	10			
	1 1/2 HP	IPCP-DP-015-2A	208/1 PH	30	24x24x10	24x24x10	30x30x10
		IPCP-DP-015-2B	230/1 PH	30			
		IPCP-DP-015-3A	208/3 PH	20			
IPCP-DP-015-3B		230/3 PH	20				
IPCP-DP-015-4		460/3 PH	10				
2 HP	IPCP-DP-020-2A	208/1 PH	30	24x24x10	24x24x10	30x30x10	
	IPCP-DP-020-2B	230/1 PH	30				
	IPCP-DP-020-3A	208/3 PH	20				
	IPCP-DP-020-3B	230/3 PH	20				
	IPCP-DP-020-4	460/3 PH	15				
3 HP	IPCP-DP-030-2B	230/1 PH	30	24x24x10	24x24x10	30x30x10	
	IPCP-DP-030-3B	230/3 PH	25				
	IPCP-DP-030-4	460/3 PH	15				
5 HP	IPCP-DP-050-4	460/3 PH	25	24x24x10	24x24x10	30x30x10	
7 1/2 HP	IPCP-DP-075-4	460/3 PH	30	24x24x10	24x24x10	30x30x10	